

# ATLAS DE URINÁLISE

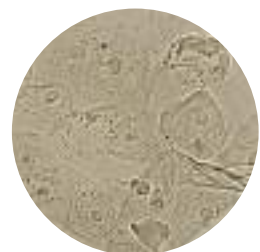
## Células Epiteliais



Células Epiteliais  
Transicionais

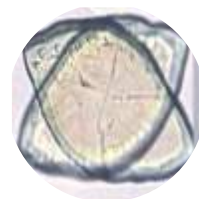
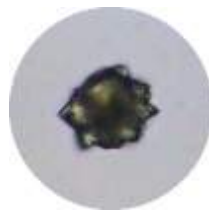


Células Tubulares  
Renais



Células Epitélio  
vaginal

## Cristais



Ácido úrico



Colesterol



Oxalato de cálcio



Ampicilina



Sulfadiazina



Fosfato triplo  
e Fosfato amorfo



Cistina

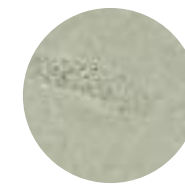


Urato amorfo



Tirosina

## Cilindros



Cilindro  
hialino



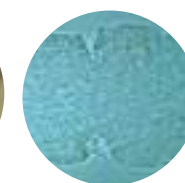
Cilindro  
adiposo



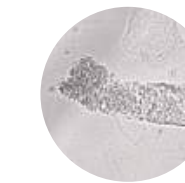
Cilindro hemático



Cilindro  
Leucocitário



Cilindro  
céreo



Cilindros granulosos

